



# PrimeCam Intervision With Screen

## All-in-one Microscope Camera

Solution for  
Binocular  
Microscopes



**4K**  
ULTRAHD  
High  
Resolution

**5G**  
Wireless  
Wi-Fi Smart

**LIVE**  
View  
Real-Time

  
Headphone  
Output

**USB  
3.0**  
USB  
Speed



Multiple  
Devices



App for iOS and Android  
  


Available to:



**High Resolution camera**, Wi-Fi 5G smart for **multiple devices in real time**, HDMI, 12 MP. Upgrade your **microscope with camera without any adapter**, between the body and observation tube.

Camera  
software  
  
Windows 10

# PrimeCam Intervision With Screen

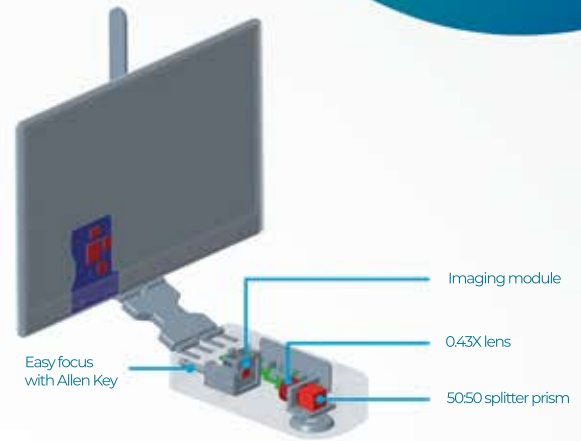
## All-in-one Microscope Camera

Solution for  
Binocular  
Microscopes

### Product Advantages

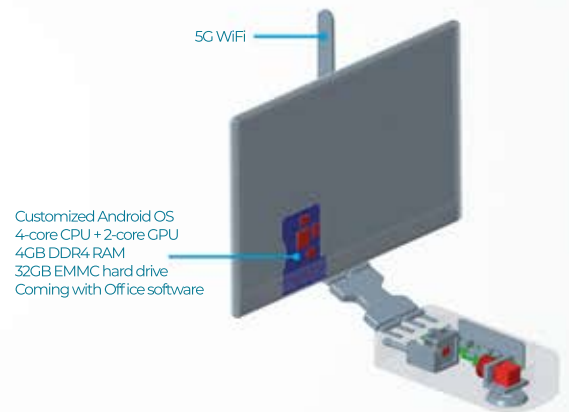
#### Integrated architecture, precise coupling beam splitting

50:50 splitter prism, 0.43X aberration correcting tube lens, precision parfocal mechanism.



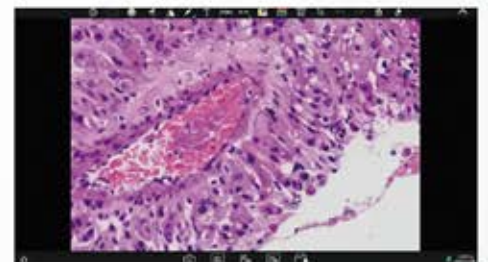
#### High capacity control board

With Standalone mode you don't need a computer, to use and manage your camera. Connect a keyboard and mouse to use all camera functions and storage your images.



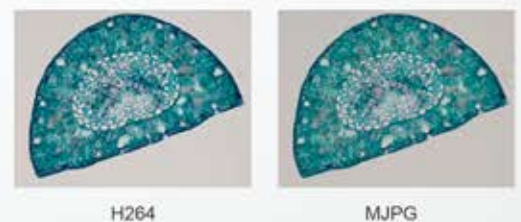
#### Customized built-in software

Compatible with mobile Microsoft Office and WPS office suite, can install third-party Android Apps. System resource calling, microscopic image processing, easy to operate.



#### High frame rate at full resolution true color restoration

H264 image algorithm, dual stream real time output. Accurate color reproduction, under the mirror is the screen, a camera with multiple working modes.



## Scalable linkage APP and PC Software

Mobile terminals or PCs equipped with the company's dedicated software (or APP) can control the camera synchronously through 5G WiFi hotspot in the main board.



## Multiple image output methods

The output combinations are: 5G WiFi, HDMI.



## Accessories, product dimensions and weight

Power adapter and power cord



HDMI cable (2m)



Allen Key (3mm)

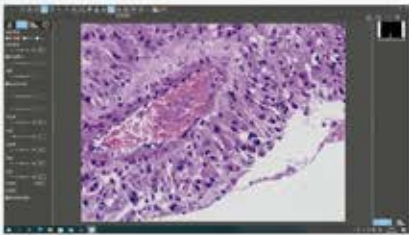


Wired mouse and keyboard

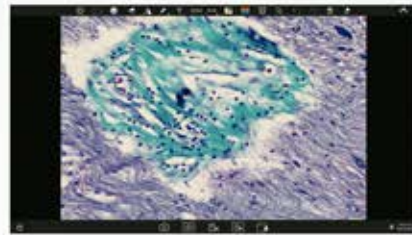




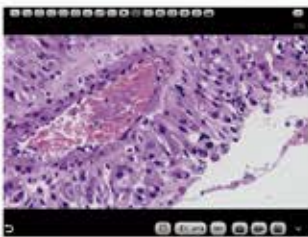
## About Software and APP for Stand-alone Cameras



**For Windows**



**Camera Screen  
Built-in Software**



**For IOS and Android**



## Windows Software: PrimeCam Pro

**5G WiFi** 

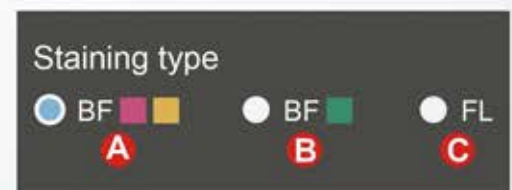
PrimeCam Pro is a ready-to-use Windows version software that requires no additional driver installation. It works with the full range of PrimeCam 12.0MP, and higher resolution cameras and supports WiFi 5G connections, providing users with more versatile and convenient ways to transfer images.



### Staining type based on color calibration

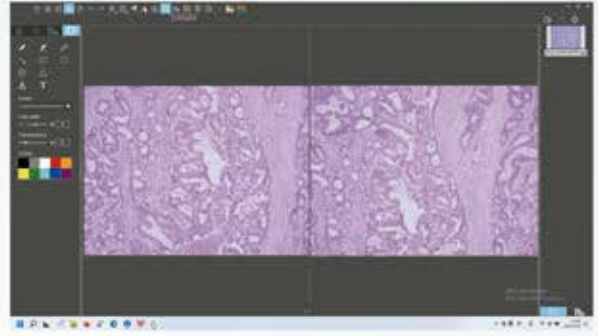
Users can choose different image modes according to the staining method of pathological sections to obtain more accurate image color.

- A** - Used in bright field for slides mainly in pink or gold.
- B** - Used in bright field for slides mainly in cyan.
- C** - Used in fluorescence mainly.



## Comparison Mode

The PrimeCam Pro can display any two or four images for comparison, supporting static image comparison, dynamic image comparison, static and dynamic mixed comparison.



## Common tools



## Annotation Tools



## Measuring tools

PrimeCam Pro provides the commonly-used measurement tools & scale bar, and supports the generation of reports in PDF, Word or Excel format according to measurements.



name	length	reference(Pixel)	unit	Note
Sample	100	200	µm	

name

Actual length

Reference(Pixel)

Unit

µm

Decimal Places

3

Additional remark

Apply Add Edit Delete

- Export to PDF
- Export to Word
- Export to Excel
- Print
- Export to email

Serial No.	Measure Item	Measured value
1	Circular measurement	Radius=48.500µm Perimeter=304.734µm Area=7389.612µm
2	Concentric circle measurement	Radius1=76.800µm Perimeter1=231.222µm Area1=4254.502µm Length=125.668µm Radius2=17.361µm Perimeter2=115.620µm Area2=2454.308µm

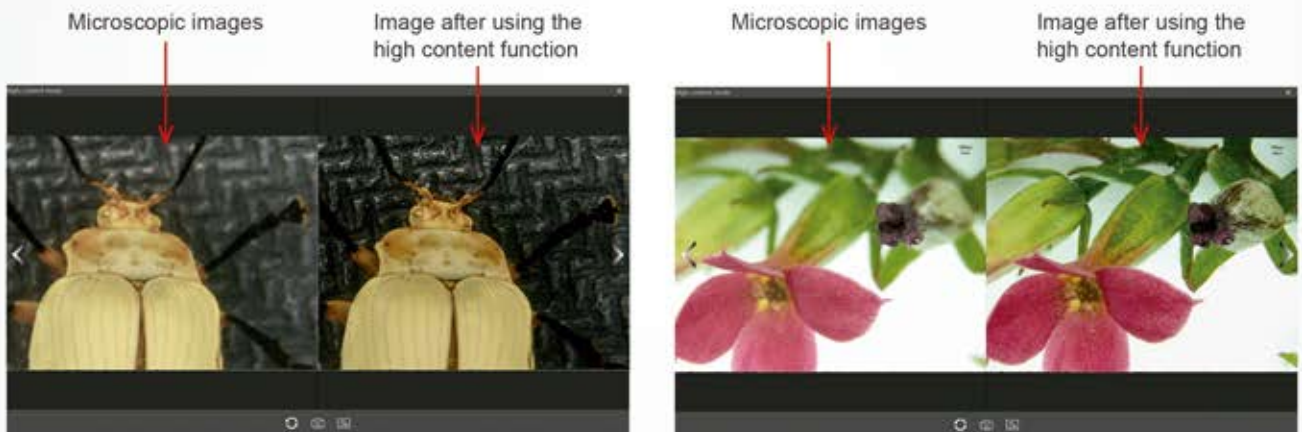
## Camera properties settings

With image properties memory function, restarting the software will restore the image properties value before the software is closed. Support adjusting target brightness, exposure, gain, white balance, image RB parameters, contrast, chroma, saturation, sharpness, gamma, restore the default parameters (Default) and etc.



## Automatic depth-of-field fusion function for high content images

The automatic depth-of-field fusion function for high content images uses cutting-edge image processing algorithms and real-time fusion technology, aiming to break through the limitation of insufficient depth-of-field in high magnification objective lenses, and to adjust the focal length can obtain a greater depth of field, thus obtaining a sharper image than a real-time single-frame image. Support PrimeCam PRO and higher resolution cameras, take one picture, two archives.



## Manual counting function

Convenient to count the number of cell nuclei and export statistical reports with one click

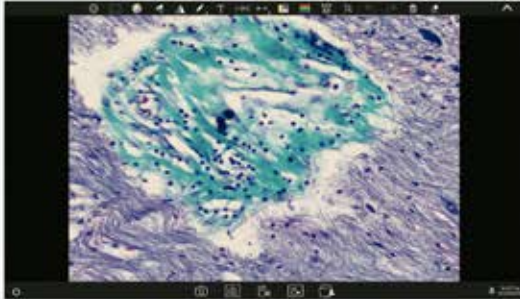


### Statistical reports

Channel	Count	Area	Perimeter
20			
<b>Statistics</b>			
Min	1	124	50
Q1	888	481	53
Q2	202	601	93
Q3	734	1254	70
Q4	71	1072	61
Q5	707	2360	108
Q6	638	2772	51
Q7	79	2884	13
Q8	652	1228	85
Q9	1877	149	88
Q10	3789	1381	99
Q11	1344	1595	117
Q12	1253	1358	56
Q13	1002	2028	62
Q14	1461	2578	71
Q15	2360	2874	103
Q16	2628	2275	75
Q17	2884	1574	47
Q18	2874	1524	71
Q19	2842	149	82
<b>Statistics</b>			
Min	1	124	13
Max	2884	2578	117
Range	2883	2454	104
Sum	26865	33274	1407
Mean	1492.94	1678.7	23.75
Variance	1049157	888973.6	323.4979
Std. Dev.	1024.284	942.8578	18.25921
Skewness			

## Manual counting function

PrimeCam Pro is an Android version APP, which is pre-installed into the PrimeCam cameras or smart cameras at the factory and does not need to be installed by the user. After the camera hardware starts, it will automatically enter the PrimeCam main interface. This APP can not be uninstalled by the user, but it can be updated and upgraded through a USB flash drive.



## Calibration and Measurement

Built-in calibration for 4X, 10X, 40X, 100X of microscopes CX23, Ei, E100, students do not need to calibrate themselves; support creating calibration for other microscope models.



## Application built-in stand-alone Cameras



## Camera properties settings

With image properties memory function, restarting the software will restore the image properties value before the software is closed. Support adjusting target brightness, exposure, gain, white balance, image RB parameters, contrast, chroma, saturation, sharpness, gamma, restore the default parameters (Default) and etc.



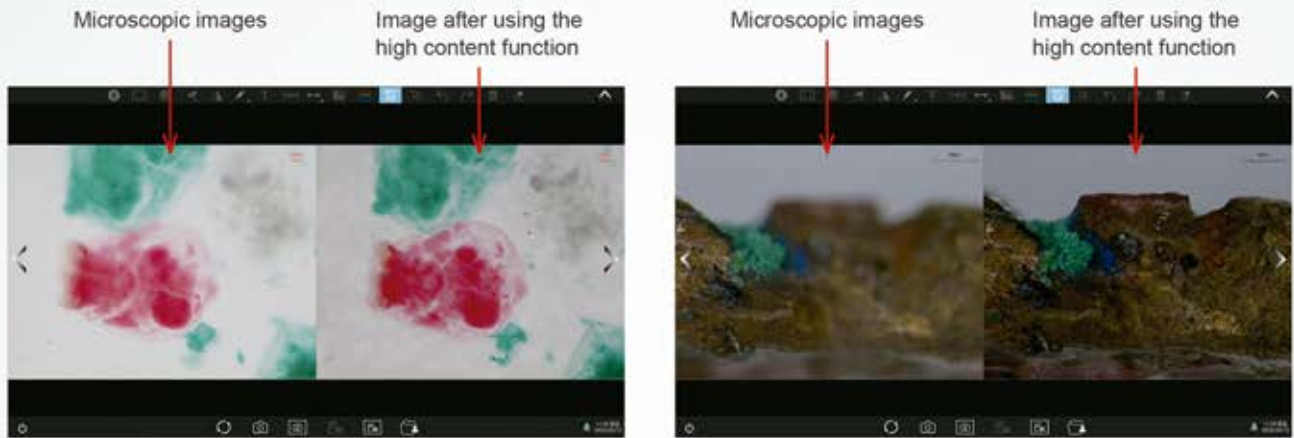
## Preference Settings

Users can set preferences such as language, brightness, sound, video duration, scale bar, back up files to a USB drive, restore factory settings, etc.



## Automatic depth-of-field fusion function for high content images

The automatic depth-of-field fusion function for high content images uses cutting-edge image processing algorithms and real-time fusion technology, aiming to break through the limitation of insufficient depth-of-field in high magnification objective lenses, and to adjust the focal length can obtain a greater depth of field, thus obtaining a sharper image than a real-time single-frame image.

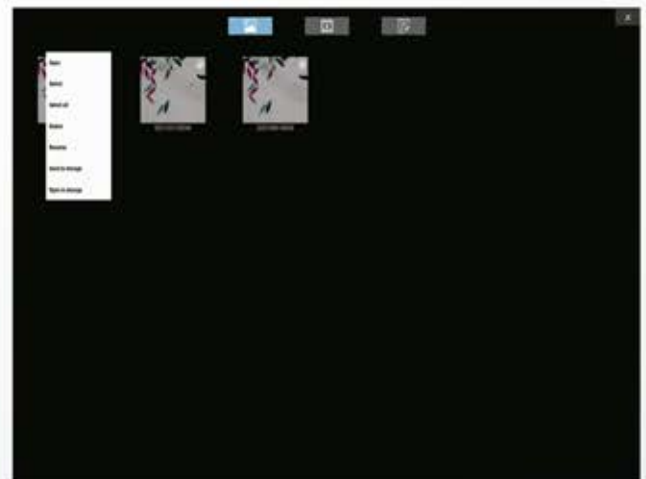


Provide two QR codes for cell phone/tablet to download APP and scan to live stream image.



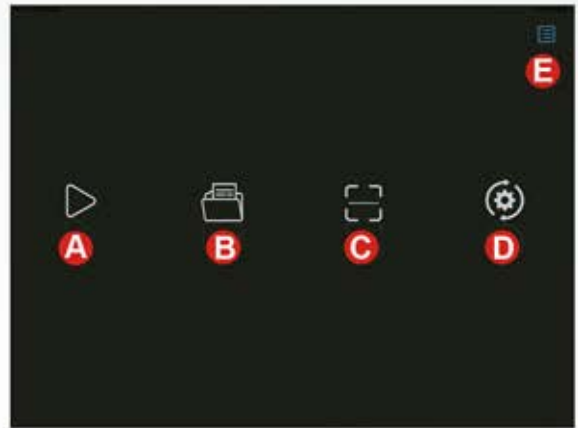
## Image and docs management

Image and video gallery:  
Files can be viewed, renamed, copied to a USB drive, etc.



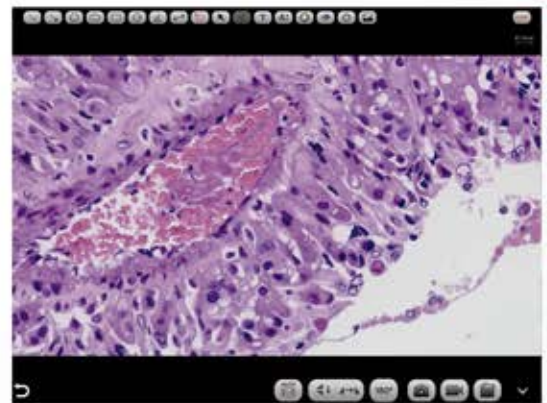


- A Preview:** Image preview window.
- B Folder manage:** photos and videos management.
- C Scan:** scan the camera's serial number QR code to obtain images (to ensure preview speed, it is recommended that no more than 10 smart terminals are connected to the same camera at the same time).
- D Settings:** App settings.
- E Operation guide:** show/hide.



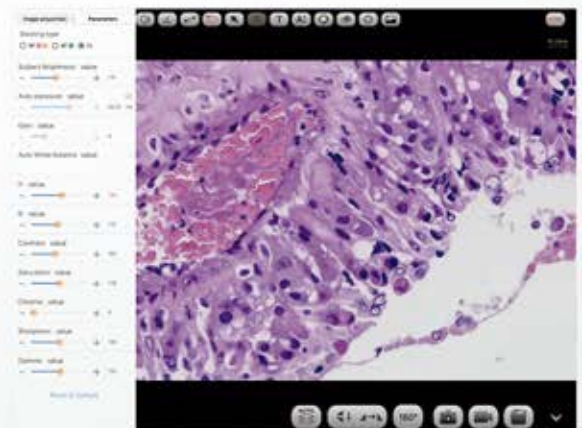
Navigation interface

## Commonly used tools: annotations, measurements, image capture



## Camera settings

Almost adjustment-free, open manual adjustment, support adjusting target brightness, auto/manual exposure, gain, auto/manual white balance (RB channels are adjusted separately), contrast, chromatic, saturation, sharpness, gamma, restore default

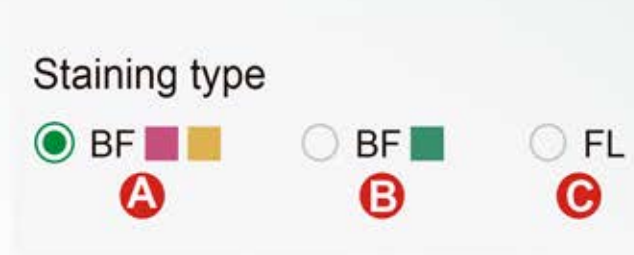


## Staining type based on color calibration

Users can choose different image modes according to the staining method of pathological sections to obtain more accurate image color.

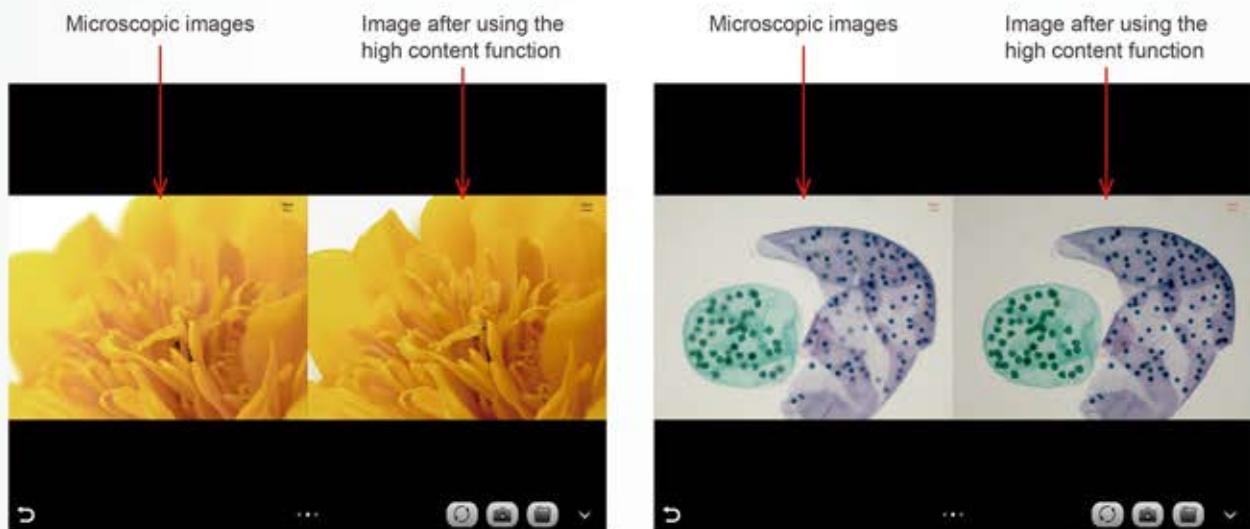
Preset mode

- A** Used in bright field for slides mainly in pink or gold.
- B** Used in bright field for slides mainly in cyan.
- C** Used in fluorescence mainly



## Automatic depth-of-field fusion function for high content images

The automatic depth-of-field fusion function for high content images uses cutting-edge image processing algorithms and real-time fusion technology, aiming to break through the limitation of insufficient depth-of-field in high magnification objective lenses, and to adjust the focal length can obtain a greater depth of field, thus obtaining a sharper image than a real-time single-frame image. Support PrimeCam Pro 12.0MP and higher resolution cameras, take one picture, two archives.



## Folder Management

Supports viewing pictures and videos, renaming, exporting to local albums, sharing to social networks, deleting, and searching by file name.





## Camera intervention series available:



## Connection Camera

### Download PrimeCam APP



### Scan QRCode camera and get the image in yor in device



## Specifications

Applicable to	Nikon	Olympus	Leica	Zeiss
Models	N12 Plus	O12 Plus	L12 Plus	Z12 Plus
Physical Resolution	12.0 MP			
Image Sensor	SONY IMX412 CMOS			
Exposure Mode	Rolling Shutter			
Maximum Resolution	4000x3000 (12000Pixels)			
ISO sensitivity	Equivalent to 100-12800			
Sensor Size	1/2.3"			
Pixel Size	1.55µmx1.55µm			
Spectral Response	380-650nm			
Exposure Capability	Real-time auto and manual adjustment			
Exposure Time	10µs×333ms			
White Balance	Real-time auto and manual RB adjustment			
Preview Resolution	4000x3000@30fps - 3840x2160@30fps			
Power Suplly	DC 12V 5A			
WiFi Protocol	5G WiFi IEEE802.11ac			
Conversion Bit Depth	12bit			
Software and App	PrimeCam			

## Certifications

1. Comply with FCC certification of The US Federal Communication Commission.
2. Comply with European (standard) safety CE certification.
3. Comply with the MIC certification issued by the Ministry of Internal Affairs and Communications of Japan (Electric Wave Method and Electro-Optical Communication Business Law).
4. Comply with Jate certification of Japaneses telecommunications law directive.
5. Comply with the "Directive on the Restrictive of the Use of Certain Hazardous Substances in Eletrical and Eletronic Equipment" (RoHS) Directives in accordance with EU legislation.



GOT QUESTIONS? CALL US 24/7!  
**+ 1 (786) 305-8327**  
 e-mail: [sales@primelifescience.com](mailto:sales@primelifescience.com)

