



PrimeCam Intervision 12 MEGA PIXELS

All-in-one Microscope Camera

Solution for
Binocular
Microscopes



5G
Wireless
Wi-Fi Smart

Headphone
Output

4K
ULTRAHD
High
Resolution

USB
3.0
USB
Speed

LIVE
IMAGE
View
Real-Time



Multiple
Devices



App for iOS and Android
Available on the
App Store
Get it on
Google play

Available to:



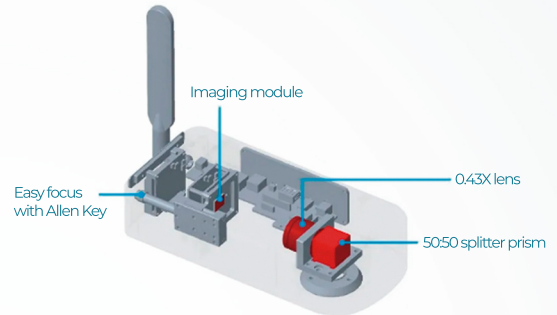
High Resolution camera, Wi-Fi 5G smart for multiple devices in real time, HDMI, 12 MP. Upgrade your microscope with camera without any adapter, between the body and observation tube.

Camera
software
Windows 10

Product Advantages

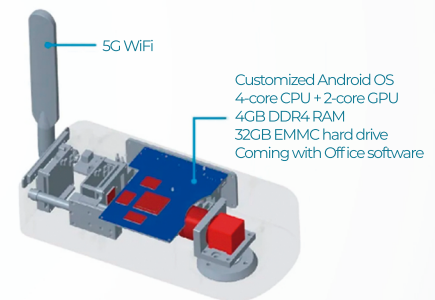
Integrated architecture, precise coupling beam splitting

50:50 splitter prism, 0.43X aberration correcting tube lens, precision parfocal mechanism.



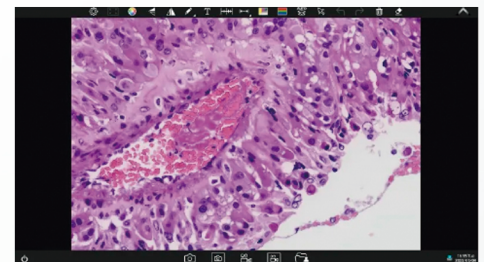
High capacity control board

With Standalone mode you don't need a computer, to use and manage your camera. Connect a keyboard and mouse to use all camera functions and storage your images.



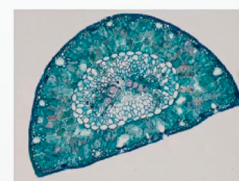
Customized built-in software

Compatible with mobile Microsoft Office and WPS office suite, can install third-party Android Apps. System resource calling, microscopic image processing, easy to operate.

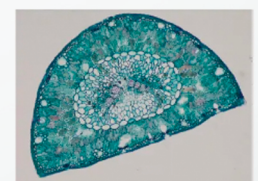


High frame rate at full resolution true color restoration

H264 image algorithm, dual stream real time output. Accurate color reproduction, under the mirror is the screen, a camera with multiple working modes.



H264



MJPG

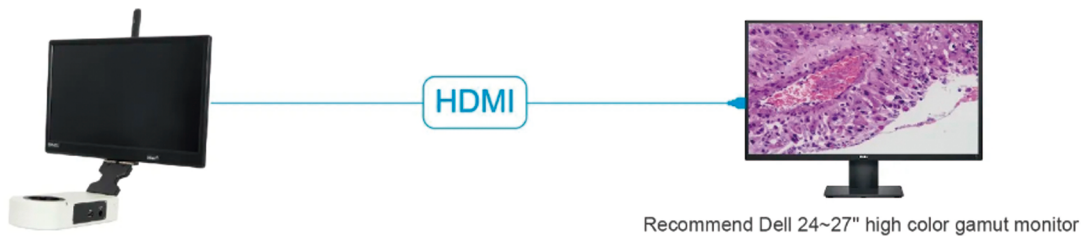
Scalable linkage APP and PC Software

Mobile terminals or PCs equipped with the company's dedicated software (or APP) can control the camera synchronously through 5G WiFi hotspot in the main board.

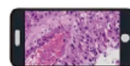
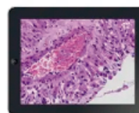


Multiple image output methods

The output combinations are: 5G WiFi, HDMI.



5G WiFi
Synchronous output



HarmonyOS

Accessories, product dimensions and weight

Power adapter and power cord



HDMI cable (2m)

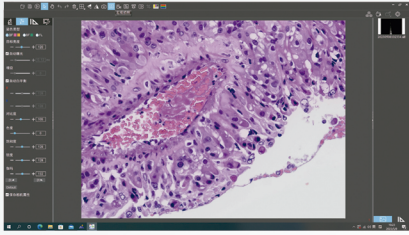


Allen Key (3mm)

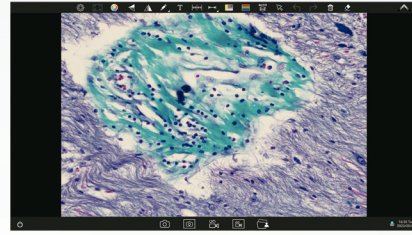




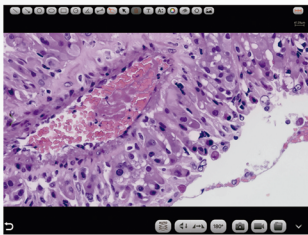
About Software and APP for Stand-alone Cameras



For Windows



**Camera
Built-in Software**



For IOS and Android



Windows Software: PrimeCam Pro

5G WiFi 

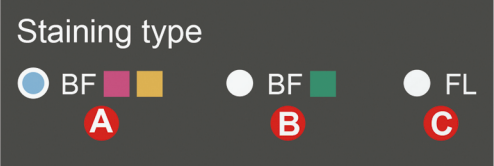
PrimeCam Pro is a ready-to-use Windows version software that requires no additional driver installation. It works with the full range of PrimeCam 12.0MP, and higher resolution cameras and supports WiFi 5G connections, providing users with more versatile and convenient ways to transfer images.



Staining type based on color calibration

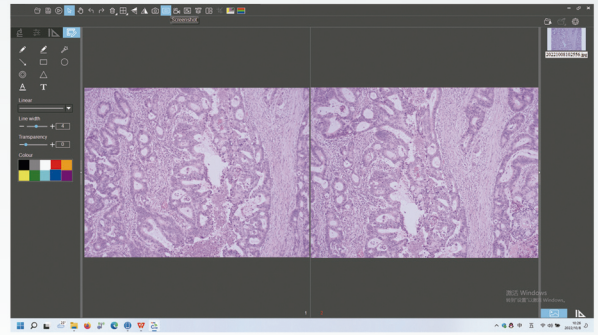
Users can choose different image modes according to the staining method of pathological sections to obtain more accurate image color.

- A** - Used in bright field for slides mainly in pink or gold.
- B** - Used in bright field for slides mainly in cyan.
- C** - Used in fluorescence mainly.

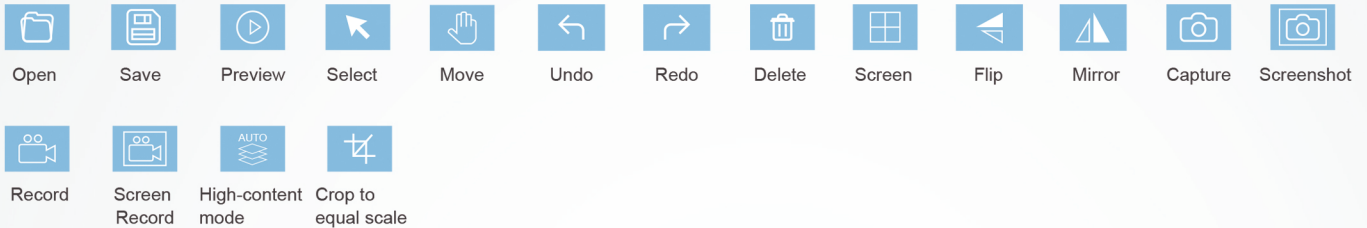


Comparison Mode

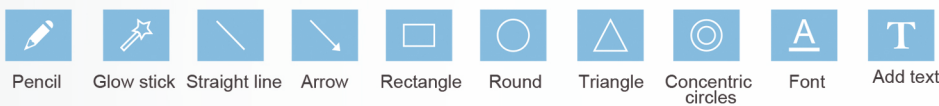
The PrimeCam Pro can display any two or four images for comparison, supporting static image comparison, dynamic image comparison, static and dynamic mixed comparison.



Common tools

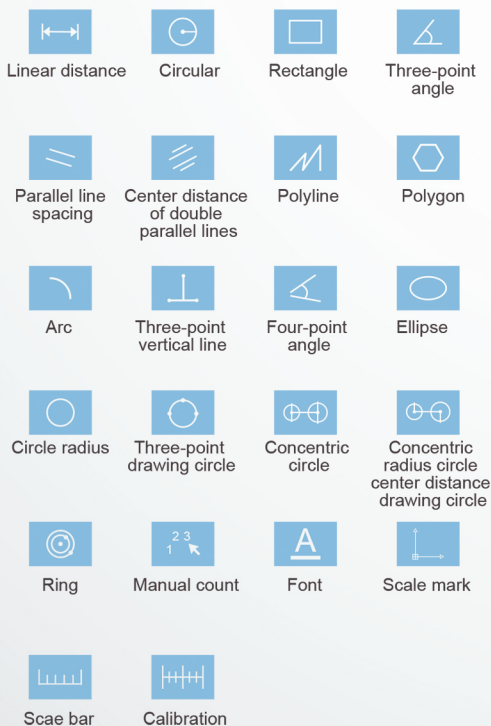


Annotation Tools



Measuring tools

PrimeCam Pro provides the commonly-used measurement tools & scale bar, and supports the generation of reports in PDF, Word or Excel format according to measurements.



name	length	Reference(Pixel)	unit	Note
Sample	100	200	µm	

name

Actual length

Reference(Pixel)

Unit

µm

Decimal Places

3

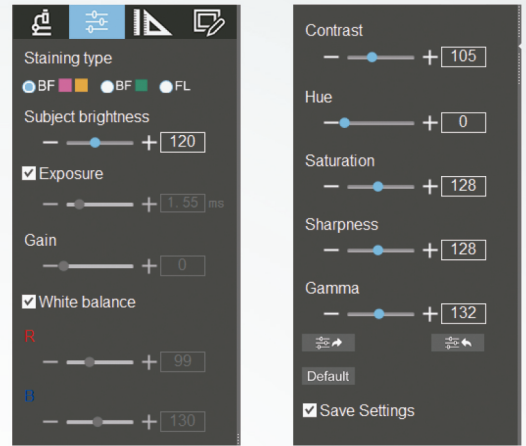
Additional remark

- Export to PDF
- Export to Word
- Export to Excel
- Print
- Export to email

Serial No.	Measure item	Measured value
1	Circular measurement	Radius=48.500um Perimeter=304.734um Area=7389.812um
2	Concentric circle measurement	Radius1=36.800um Perimeter1=231.222um Area1=4254.502um Length=125.668um Radius2=27.951um Perimeter1=175.620um Area1=2454.369um

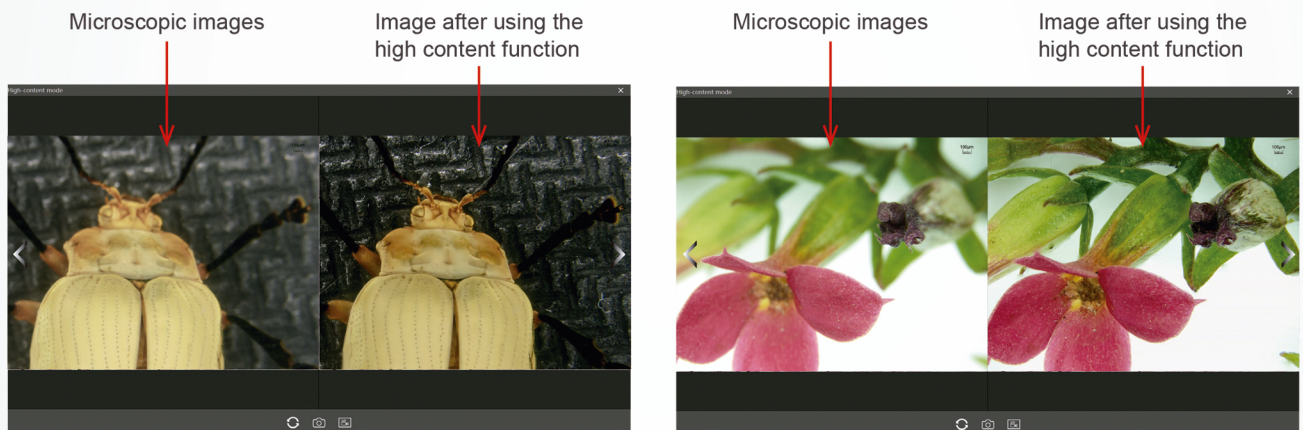
Camera properties settings

With image properties memory function, restarting the software will restore the image properties value before the software is closed. Support adjusting target brightness, exposure, gain, white balance, image RB parameters, contrast, chroma, saturation, sharpness, gamma, restore the default parameters (Default) and etc.



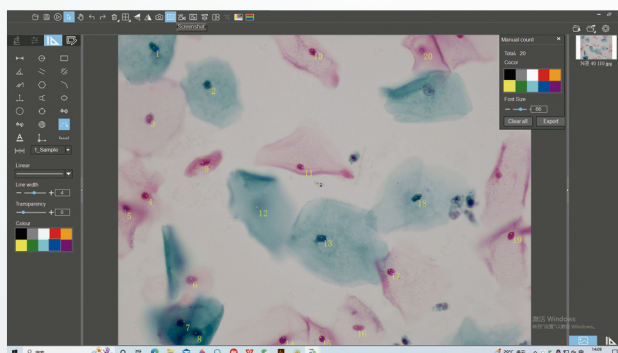
Automatic depth-of-field fusion function for high content images

The automatic depth-of-field fusion function for high content images uses cutting-edge image processing algorithms and real-time fusion technology, aiming to break through the limitation of insufficient depth-of-field in high magnification objective lenses, and to adjust the focal length can obtain a greater depth of field, thus obtaining a sharper image than a real-time single-frame image. Support PrimeCam PRO and higher resolution cameras, take one picture, two archives.



Manual counting function

Convenient to count the number of cell nuclei and export statistical reports with one click

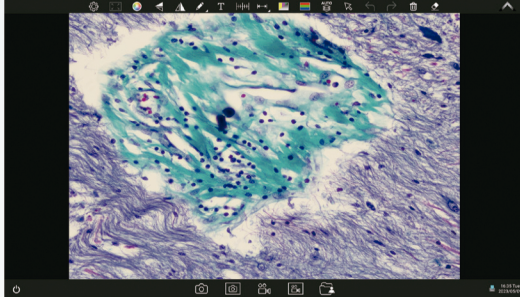


Statistical reports

Samples			
20			
Measure			
Object	X	Y	Intensity
1	340	124	50
2	888	483	63
3	302	301	93
4	274	1559	70
5	71	1693	61
6	707	2360	108
7	639	2775	51
8	751	2864	19
9	820	1238	85
10	1877	149	64
11	1786	1281	99
12	1344	1665	117
13	1970	1968	82
14	1602	2928	62
15	1961	2925	71
16	2301	2831	103
17	2629	2276	75
18	2894	1574	47
19	3804	1924	73
20	2940	149	82
Statistics			
Item	X	Y	Intensity
Min	71	124	19
Max	3804	2928	117
Range	3733	2804	98
Sum	28995	33374	1455
Mean	1449.75	1678.7	72.75
Variance	1049157	886572.6	527.4875
Std.Dev.	1024.284	941.5798	22.9671
Samples: 20			

Manual counting function

PrimeCam Pro is an Android version APP, which is pre-installed into the PrimeCam cameras or smart cameras at the factory and does not need to be installed by the user. After the camera hardware starts, it will automatically enter the PrimeCam main interface. This APP can not be uninstalled by the user, but it can be updated and upgraded through a USB flash drive.



Calibration and Measurement

Built-in calibration for 4X, 10X, 40X, 100X of microscopes CX23, Ei, E100, students do not need to calibrate themselves; support creating calibration for other microscope models.



Calibrate



Measure a straight line



Measure a circle



Measure a rectangle



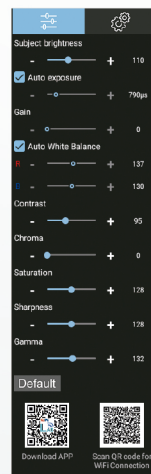
Measure an angle

Application built-in stand-alone Cameras



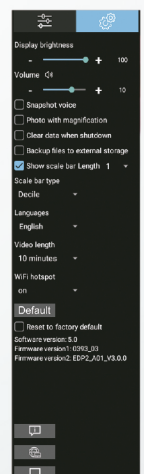
Camera properties settings

With image properties memory function, restarting the software will restore the image properties value before the software is closed. Support adjusting target brightness, exposure, gain, white balance, image RB parameters, contrast, chroma, saturation, sharpness, gamma, restore the default parameters (Default) and etc.



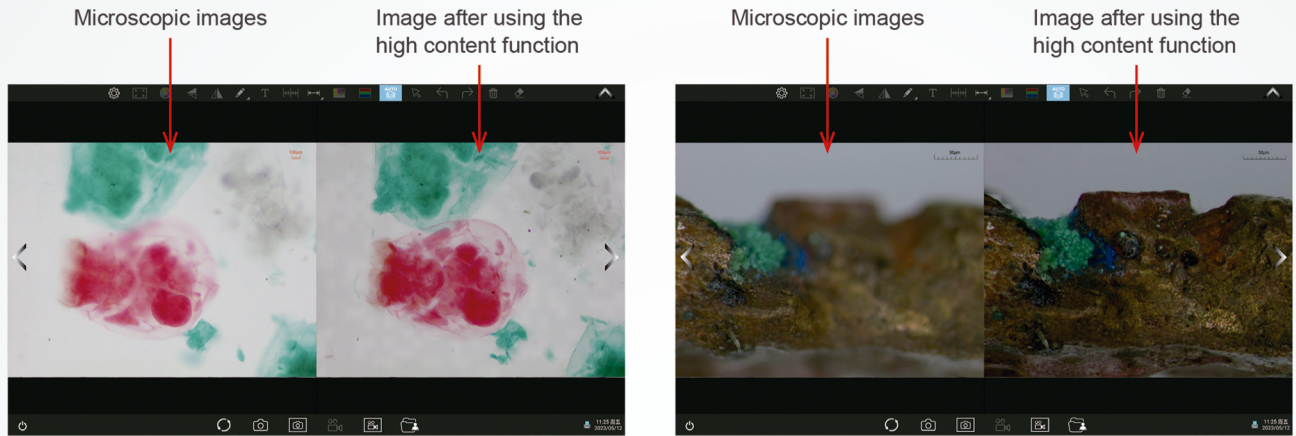
Preference Settings

Users can set preferences such as language, brightness, sound, video duration, scale bar, back up files to a USB drive, restore factory settings, etc.



Automatic depth-of-field fusion function for high content images

The automatic depth-of-field fusion function for high content images uses cutting-edge image processing algorithms and real-time fusion technology, aiming to break through the limitation of insufficient depth-of-field in high magnification objective lenses, and to adjust the focal length can obtain a greater depth of field, thus obtaining a sharper image than a real-time single-frame image.



Provide two QR codes for cell phone/tablet to download APP and scan to live stream image.

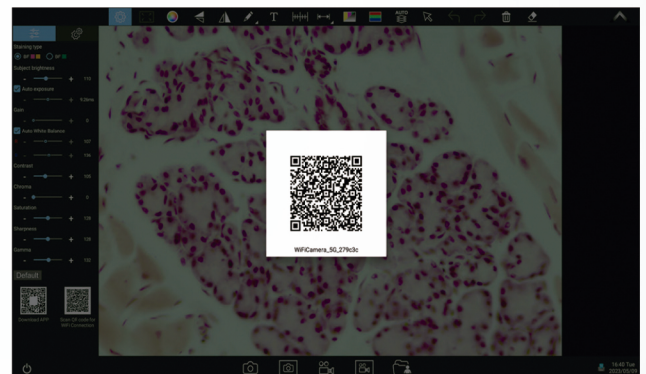
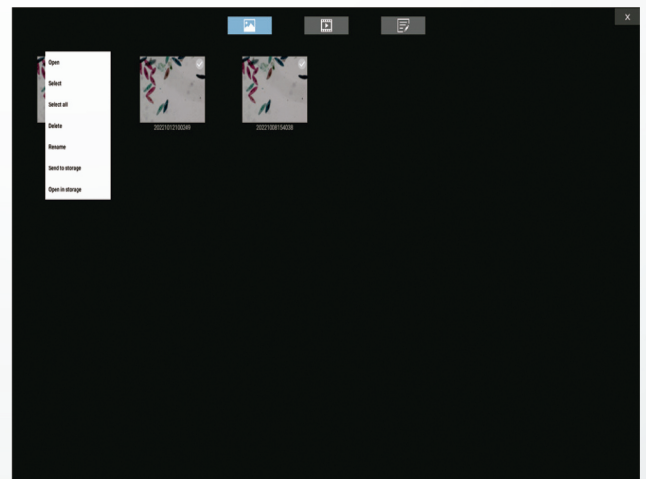
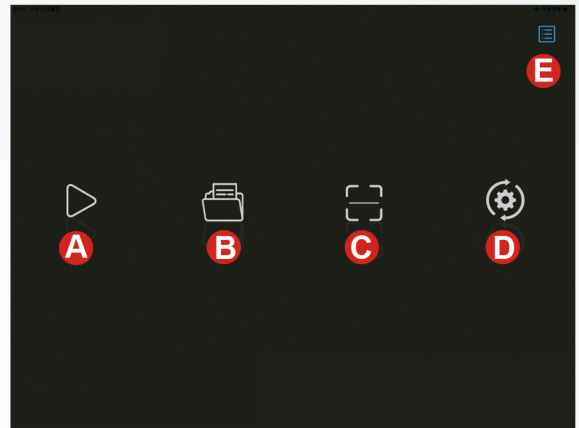


Image and docs management

Image and video gallery:
Files can be viewed, renamed, copied to a USB drive, etc.

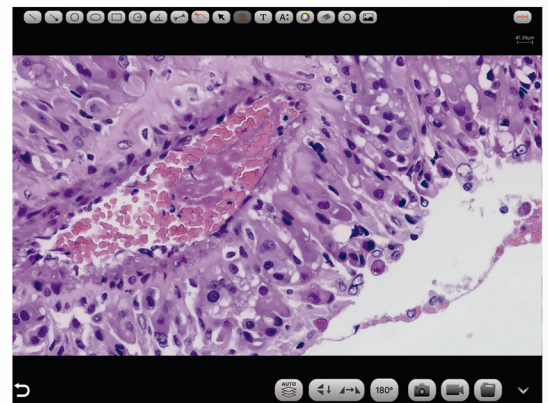
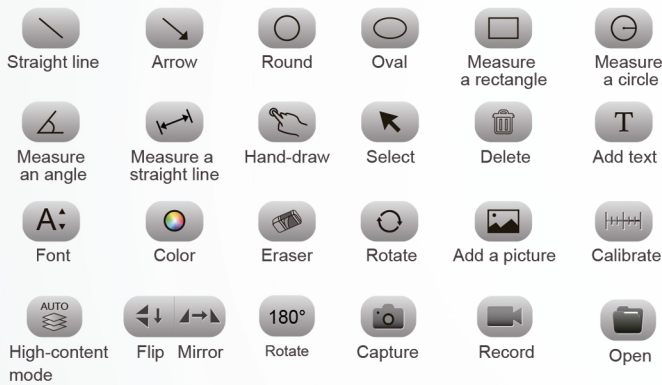


- A Preview:** Image preview window.
- B Folder manage:** photos and videos management.
- C Scan:** scan the camera's serial number QR code to obtain images (to ensure preview speed, it is recommended that no more than 10 smart terminals are connected to the same camera at the same time).
- D Settings:** App settings.
- E Operation guide:** show/hide.



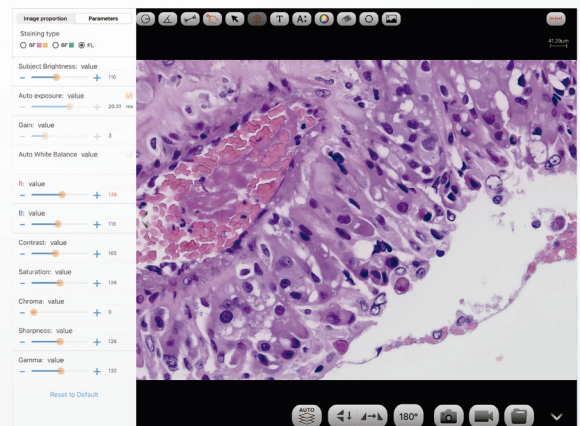
Navigation interface

Commonly used tools: annotations, measurements, image capture



Camera settings

Almost adjustment-free, open manual adjustment, support adjusting target brightness, auto/manual exposure, gain, auto/manual white balance (RB channels are adjusted separately), contrast, chromatic, saturation, sharpness, gamma, restore default



Staining type based on color calibration

Users can choose different image modes according to the staining method of pathological sections to obtain more accurate image color.

Preset mode

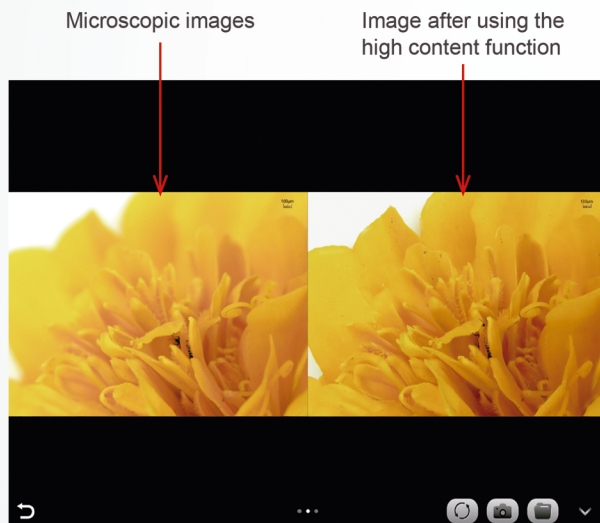
- A** Used in bright field for slides mainly in pink or gold.
- B** Used in bright field for slides mainly in cyan.
- C** Used in fluorescence mainly

Staining type



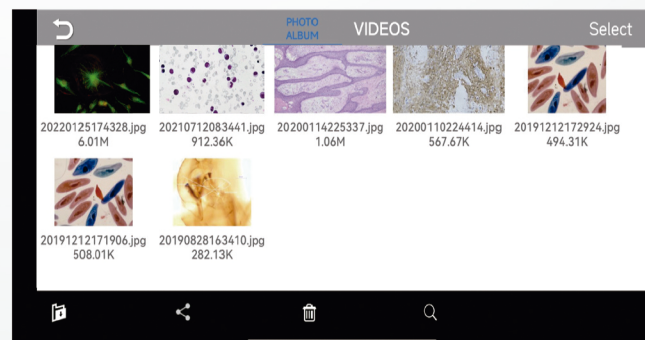
Automatic depth-of-field fusion function for high content images

The automatic depth-of-field fusion function for high content images uses cutting-edge image processing algorithms and real-time fusion technology, aiming to break through the limitation of insufficient depth-of-field in high magnification objective lenses, and to adjust the focal length can obtain a greater depth of field, thus obtaining a sharper image than a real-time single-frame image. Support PrimeCam Pro 12.0MP and higher resolution cameras, take one picture, two archives.



Folder Management

Supports viewing pictures and videos, renaming, exporting to local albums, sharing to social networks, deleting, and searching by file name.





Camera intervention series available:



Connection Camera

Download PrimeCam APP



Scan QRCode camera and get the image in yor in device



Specifications

Applicable to	Nikon	Olympus	Leica	Zeiss
Models	N12	O12	L12	Z12
Physical Resolution	12.0 MP			
Image Sensor	SONY IMX412 CMOS			
Exposure Mode	Rolling Shutter			
Maximum Resolution	4000x3000 (12000Pixels)			
ISO sensitivity	Equivalent to 100-12800			
Sensor Size	1/2.3"			
Pixel Size	1.55µm x 1.55µm			
Spectral Response	380-650nm			
Exposure Capability	Real-time auto and manual adjustment			
Exposure Time	10µs x 333ms			
White Balance	Real-time auto and manual RB adjustment			
Preview Resolution	4000x3000@30fps - 3840x2160@30fps			
Power Suplly	DC 12V 5A			
WiFi Protocol	5G WiFi IEEE802.11ac			
Conversion Bit Depth	12bit			
Software and App	PrimeCam			

Certifications

1. Comply with FCC certification of The US Federal Communication Commission.
2. Comply with European (standard) safety CE certification.
3. Comply with the MIC certification issued by the Ministry of Internal Affairs and Communications of Japan (Electric Wave Method and Electro-Optical Communication Business Law).
4. Comply with Jate certification of Japanese telecommunications law directive.
5. Comply with the "Directive on the Restrictive of the Use of Certain Hazardous Substances in Electrical and Electronic Equipment" (RoHS) Directives in accordance with EU legislation.



GOT QUESTIONS? CALL US 24/7!
+ 1 (786) 305-8327
 e-mail: sales@primelifescience.com



Prime
 Life Science
 .corp