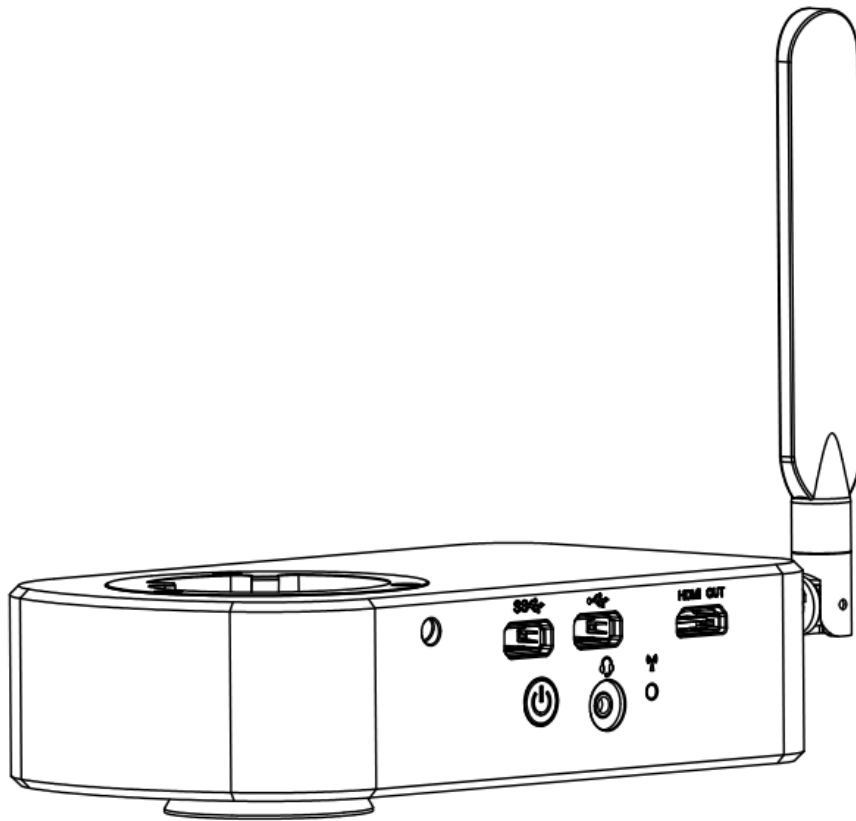




# PrimeCam Intervision



# App

## User Manual

# Content

|  |     |
|--|-----|
| 1. Hardware requirements.....                        | -1- |
| 2. Operating system requirements.....                | -1- |
| 3.APP download and installation .....                | -1- |
| 4.Connect and capture images by using the APP .....  | -2- |
| 5.APP function introduction.....                     | -2- |
| 6.Real-time preview window button introductions..... | -3- |
| 7.Folder management.....                             | -5- |
| 7.1 Images management.....                           | -5- |
| 7.2 Video management.....                            | -6- |
| 8.Use the APPfor calibration and measurement.....    | -7- |



## 1. Hardware requirements

Please confirm that the smart terminal device (mobile phones/ tablets) hardware must support the 5G WiFi IEEE802.11ac protocol, otherwise it will not be able to acquire the image correctly.

## 2. Operating system requirements

### iOS system:

The list of iOS devices supporting 5G WiFi IEEE802.11ac is as follows:

iPhone X/ 8/ 8 Plus/7/ 7 Plus/6s/6s Plus/ 6/6 Plus / 11 / 11 Pro / 11 ProMax / 12 / 12 Pro  
iPad Pro (12.9 inches, 2nd generation) / (12.9 inches, 1st generation) / (10.5 inches) / (9.7 inches) iPad Air 2/iPad mini 4 and other new devices that support the 5G WiFi (11ac) protocol  
Requires iOS 14.0 and later version.

### Android system:

Android 5.0 and later version.

CPU: Dual core 1.7GHz and later version. Memory RAM: 3G or more

Storage ROM: Recommended 8G or more

## 3. APP download and installation.

Use the smart terminal device to scan the QR code of the student camera and download and install [PrimeCam] as prompted.

Apple Store CÓDIGO QR



App Play Store CÓDIGO QR



Select APP download entry according to the system type of the smart terminal.

#### 4. Connect and capture images by using the APP

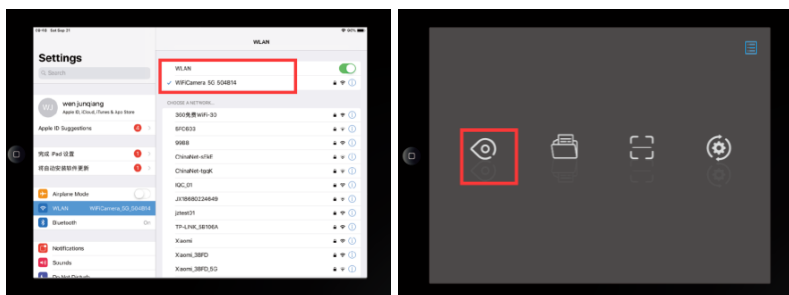
After the APP is installed, the camera's serial number QR code on the camera body can be scanned using the built-in QR code scanner of the APP to directly connect and acquire images.

Scan "seat QR code" within the APP



#### Manual connection: manual input connection passwords

- 1) Assembly the camera to a microscope
- 2) Power the camera
- 3) Go to settings of mobile device, connect the WIFI signal WiFiCamera\_5G\_xxxxxx and input default passwords 12345678.
- 4) Run "PrimeCam" application. Click the "Preview" icon in the application to preview image.
- 5) Please refer to [User Manual of PrimeCam WiFi] for detailed operation.



## 5. APP function introduction



Preview : Click here to enter the image preview window.



File folder : View photo/video files.



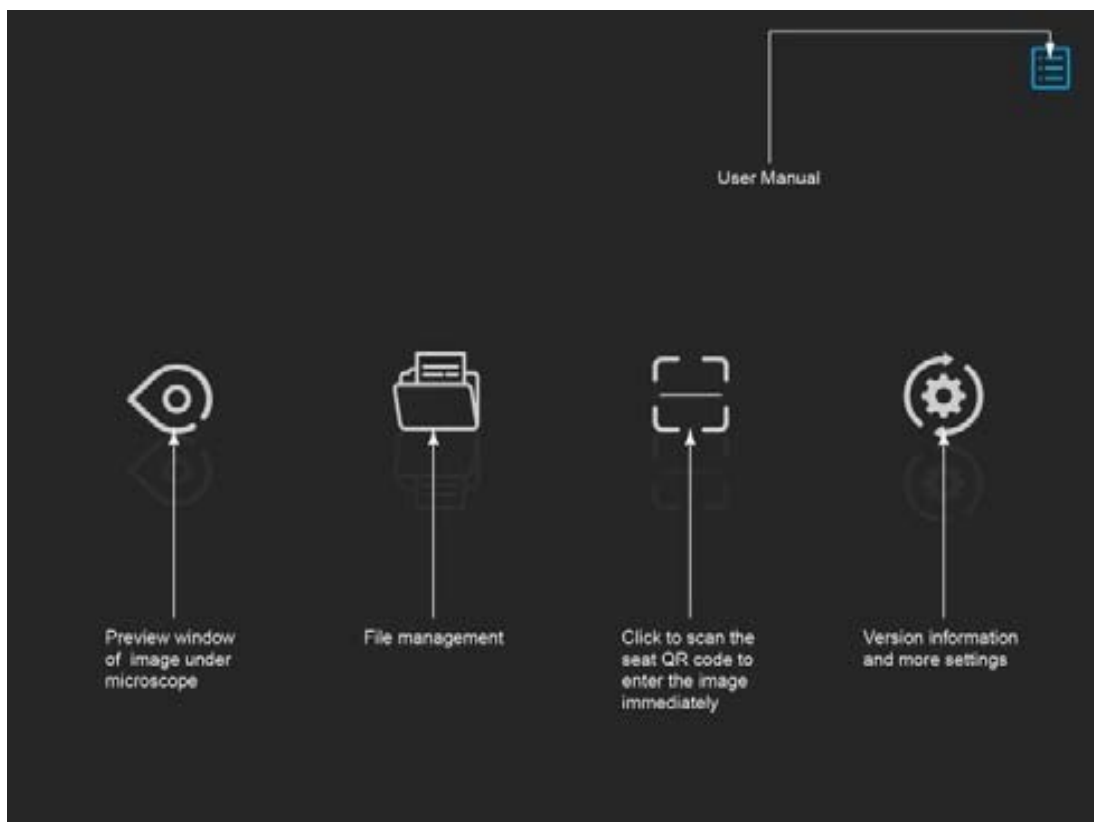
Scanning : Scan the camera's serial number QR code to acquire the image. To ensure preview speed, it is recommended that no more than 8 smart terminals connect to the same camera at the same time.



Settings : APP settings.



User instructions : Retrieve/hide user instructions.  
(top right corner)



## 6. Real-time preview window button introductions



This button toggles the preview mode to fast speed or high image quality. But the image taken is only the highest resolution by default.

### Annotation tools

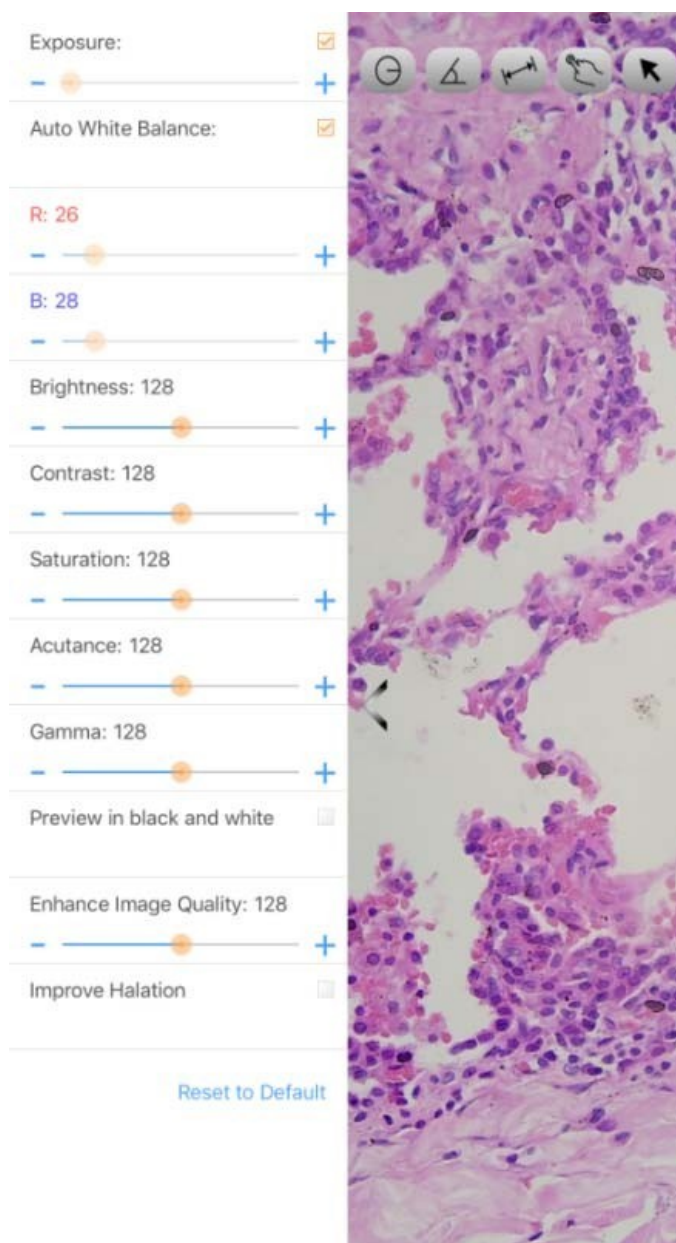


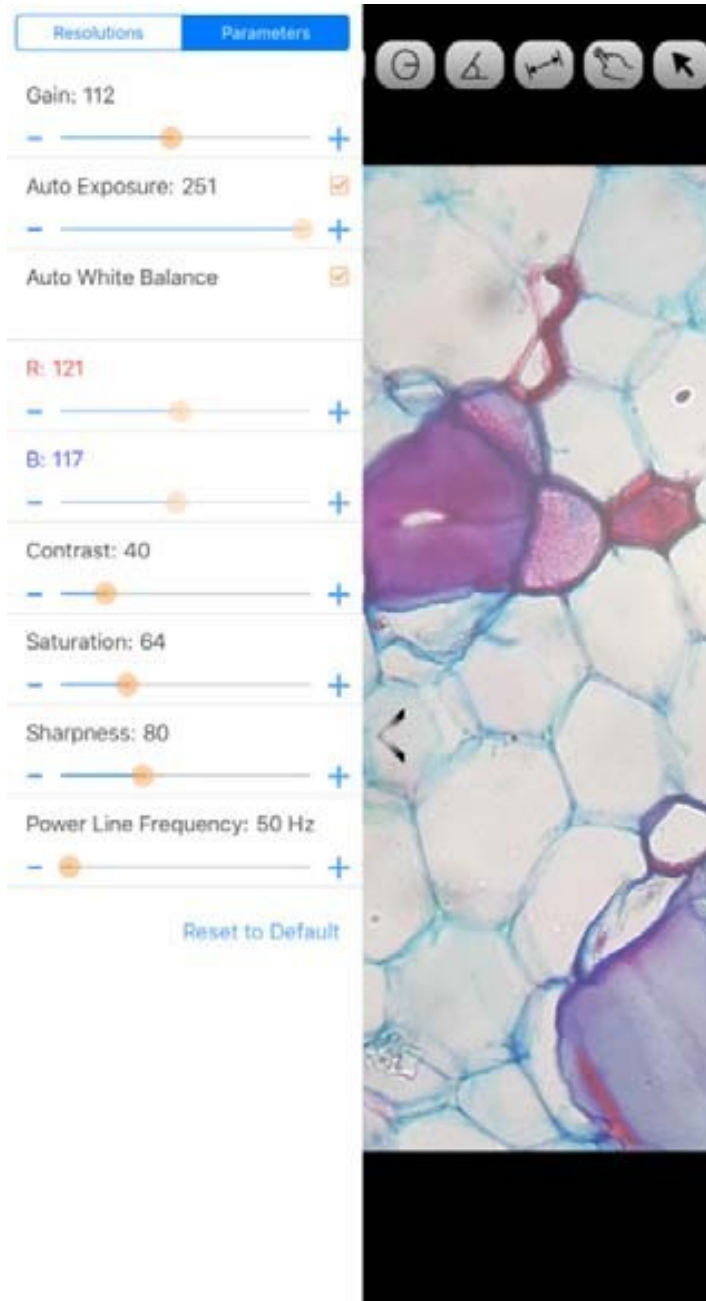
Click the left arrow button in the preview window to bring up the image properties toolbar.

Image properties toolbar adapts to one of the following two modes depending on the product model.

**Mode:** Adjustable Exposure/White

Balance/Brightness/Contrast/Saturation/Sharpness/Gamma/Black and White Preview (On/Off)/Overexposure Suppression/Image Enhancement/Restore Default Settings, as shown below





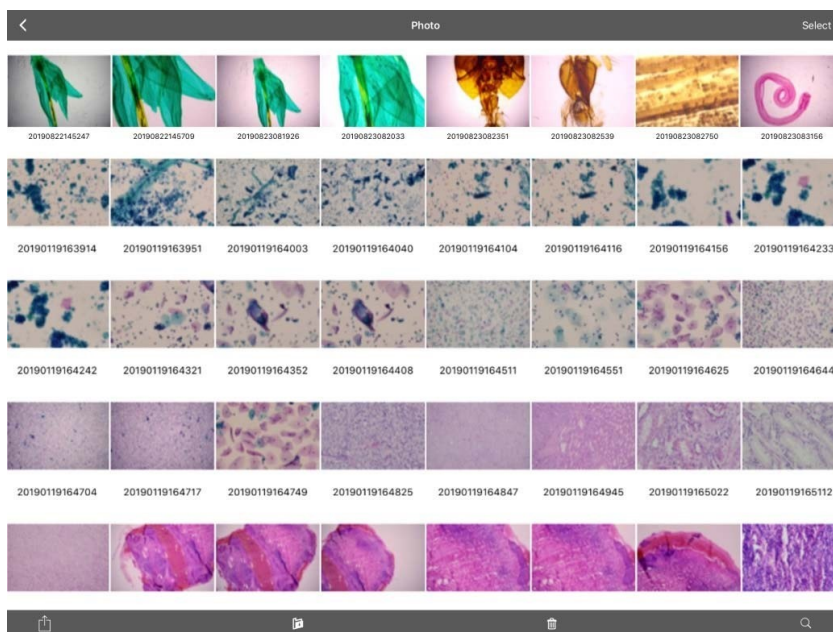
Brightness/Exposure/White  
Balance/Contrast/Saturation/Sharpness/Power Line/Restore Default  
Settings, as shown below



## 7. Folder management



### 7.1 Images management



Click on "Select" in the upper right corner to make single or multiple selections and then click on the bottom four buttons:

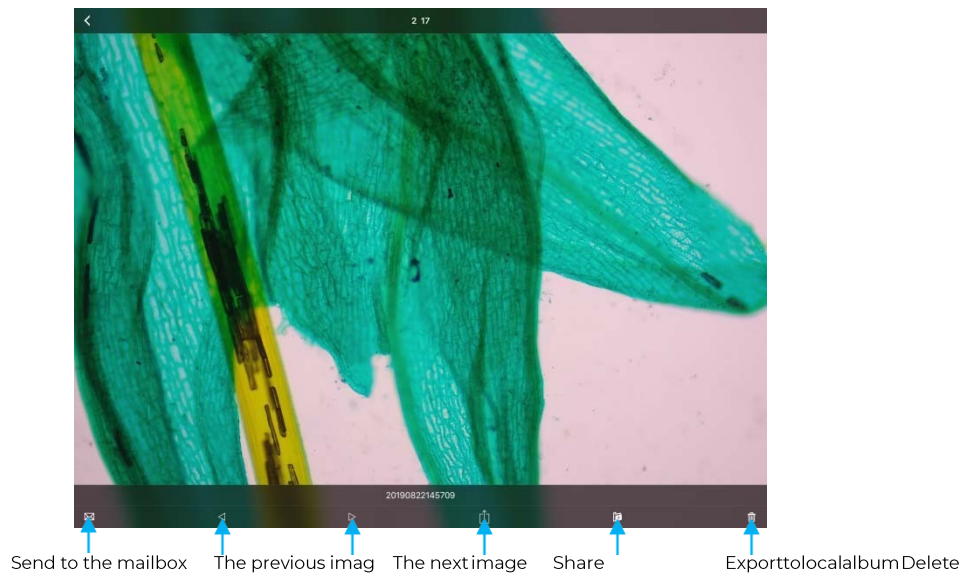
- One-click export to local album

Note: Please select Allow APP to access your album by setting your smart terminal "Privacy - Photo", otherwise it will prompt "Export fail".

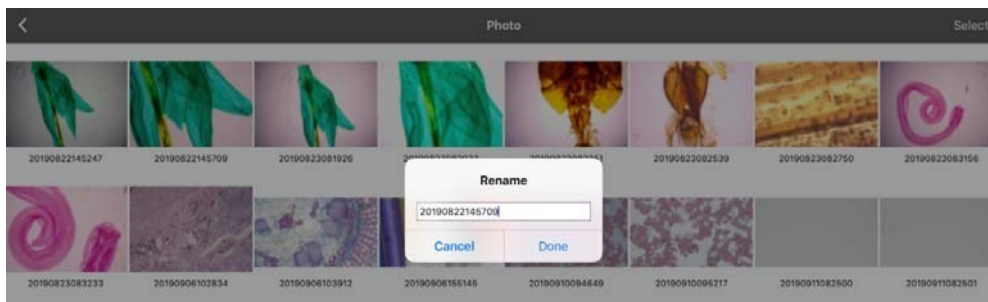
- Share to social networks
- One-click delete
- Search image file by name

Click to enter any image, the bottom button from left to right:

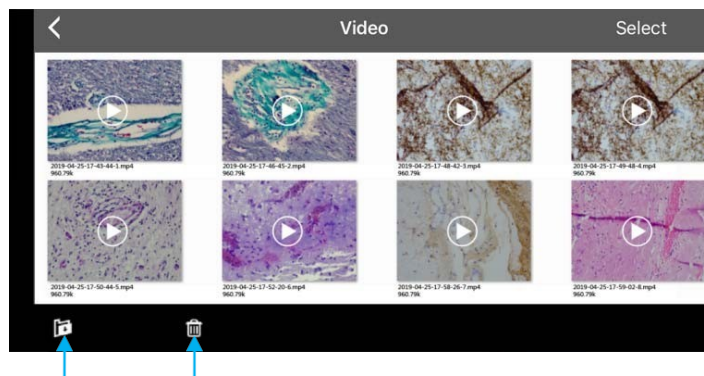
- send to the mailbox (the device needs to be installed in advance with the mailbox);
- the previous image;
- the next image;
- share a single image to the social network;
- export the image to the local Album;
- delete the picture



Click on the file name to rename.



## 7.2 Video management



Export to local album    Delete    Click "Select" in the top right corner and then click the button at the bottom.

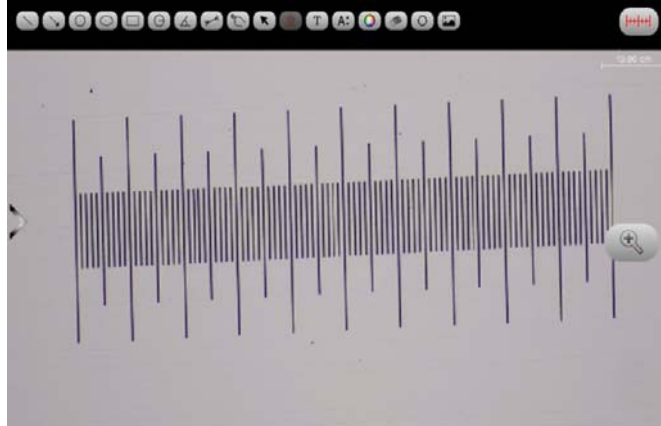
- One-click export to local camera

Note: Please select Allow APP to access your album by setting your smart terminal "Privacy-Photo" otherwise it will prompt "Export fail".

- One-click delete

8. Use the APP for calibration and measurement

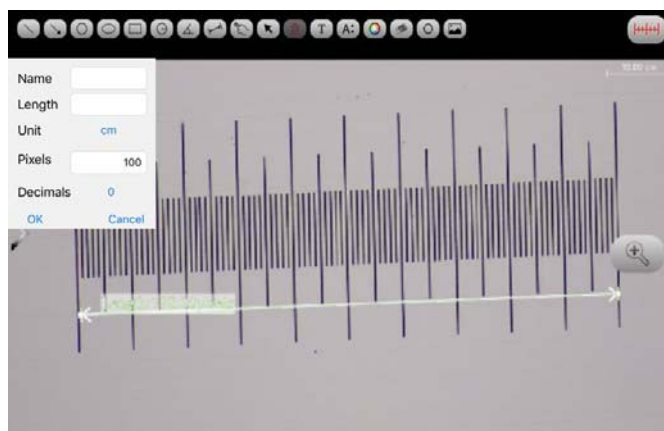
Place the calibration scale within the microscope's field of view.



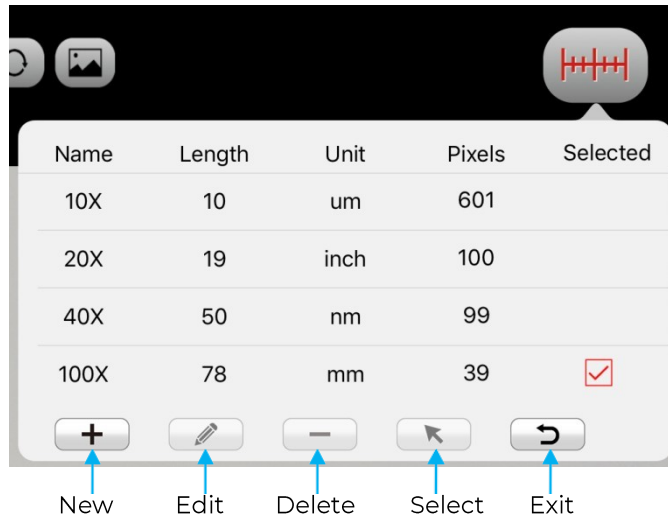
Click  - and "add"

|          |                                  |
|----------|----------------------------------|
| Name     | <input type="text"/>             |
| Length   | <input type="text"/>             |
| Unit     | cm                               |
| Pixels   | <input type="text" value="100"/> |
| Decimals | 0                                |
|          | OK Cancel                        |

Enter the name, the actual length of the calibration scale, and select the unit. When you draw on the ruler, the pixels are automatically entered as shown below. Click "OK" to complete the calibration.



Select calibration value



| Name | Length | Unit | Pixels | Selected                            |
|------|--------|------|--------|-------------------------------------|
| 10X  | 10     | um   | 601    |                                     |
| 20X  | 19     | inch | 100    |                                     |
| 40X  | 50     | nm   | 99     |                                     |
| 100X | 78     | mm   | 39     | <input checked="" type="checkbox"/> |

+ New    Edit    - Delete    Select    Exit

Then use the measurement tool at the top of the preview window to measure.

