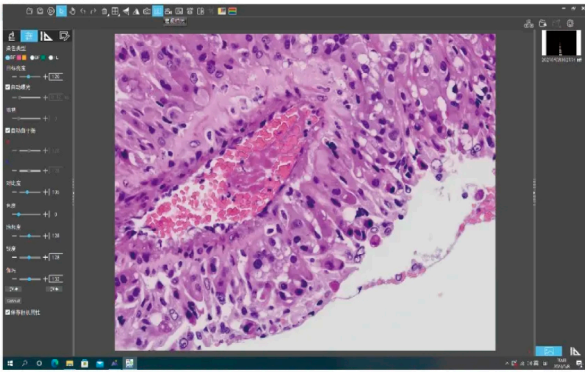
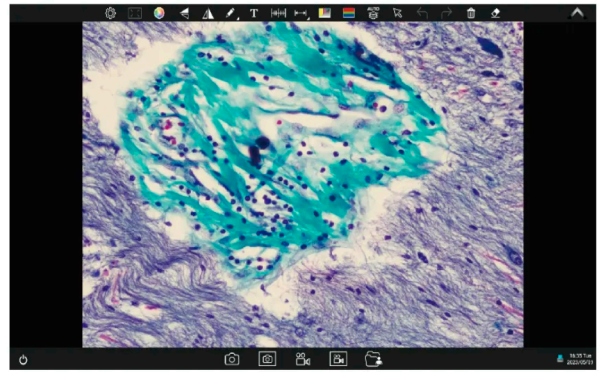




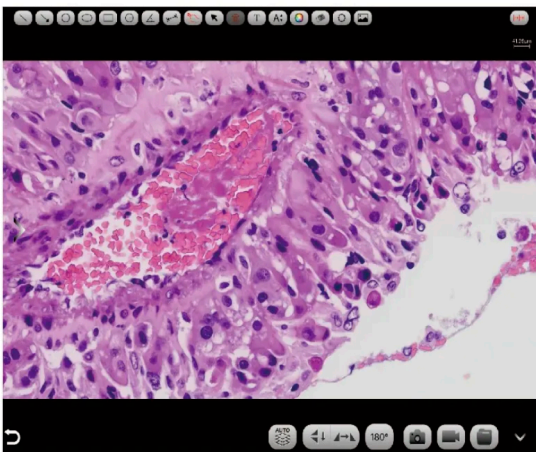
PRIME STAND-ALONE CAMERAS



For Windows



For Android



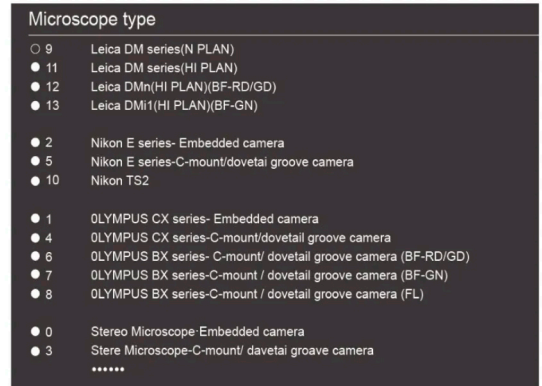
For iOS

Capture Pro is a ready-to-use Windows version software that requires no additional driver installation. It works with the full range of 12.0MP, 20.0MP and higher resolution cameras and supports not only USB connections, but also WiFi and network connections, providing users with more versatile and convenient ways to transfer images.



» Invoke camera's built-in firmware

Different brands and types of microscopes (biological, industrial, polarized light, metallographic microscopes, etc.), because of their optical lenses, light source differences and other factors lead to the camera to adjust the white balance, so as to get closer to the color reproduction under the mirror. camera broke the tradition of only one set of image firmware for one camera, revolutionizing the design of a camera built-in multiple sets of image firmware to adapt to different microscope brands and types. The installation engineer can call the best matching firmware through the Capture Pro according to the actual situation, and get the best image quality without user's manual operation.

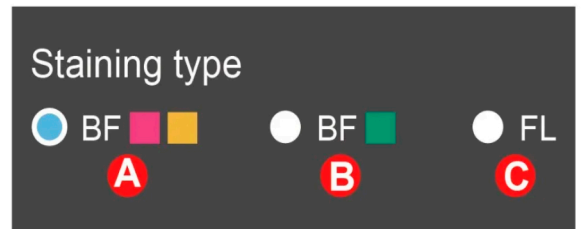


» Staining type based on color calibration

Users can choose different image modes according to the staining method of pathological sections to obtain more accurate image color.

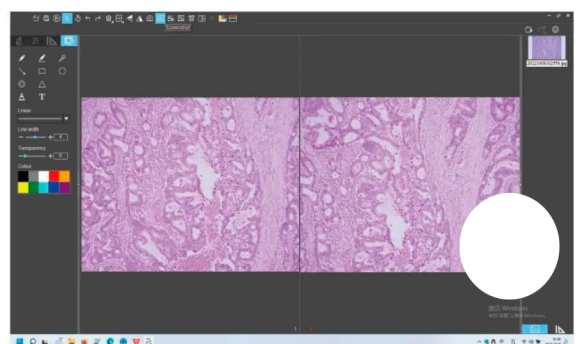
Preset mode

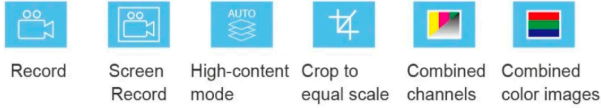
- A** Used in bright field for slides mainly in pink or gold.
- B** Used in bright field for slides mainly in cyan.
- C** Used in fluorescence mainly.



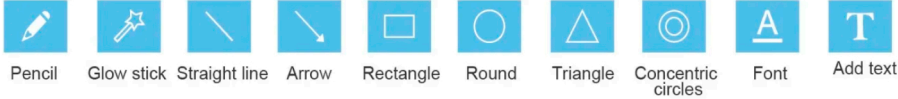
» Comparison Mode

The Capture Pro can display any two or four images for comparison, supporting static image comparison, dynamic image comparison, static and dynamic mixed comparison.



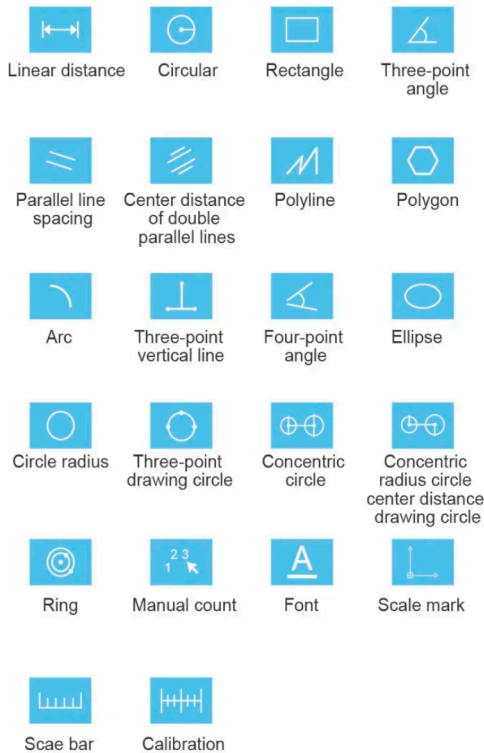


Annotation Tools



Measuring tools

Capture Pro provides the commonly-used measurement tools & scale bar, and supports the generation of reports in PDF, Word or Excel format according to measurements.



| name | length | Reference(Pixel) | unit | Note |
|--------|--------|------------------|------|------|
| Sample | 100 | 200 | µm | |
| | | | | |
| | | | | |
| | | | | |
| | | | | |
| | | | | |
| | | | | |
| | | | | |
| | | | | |
| | | | | |

name:

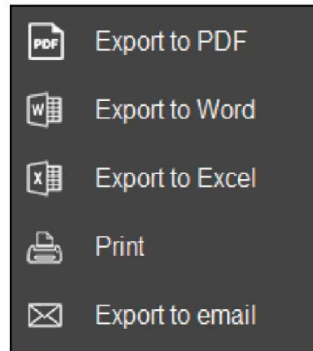
Actual length:

Reference(Pixel):

Unit:

Decimal Places:

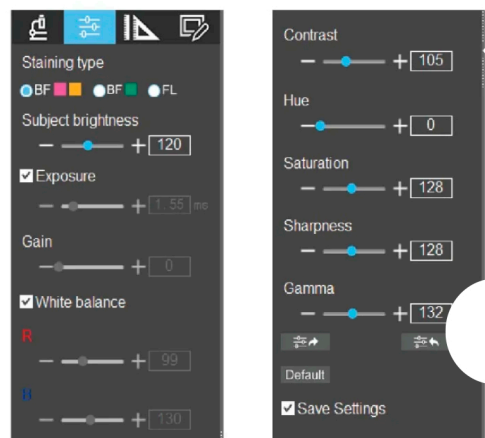
Additional remark:



| Serial No. | Measure item | Measured value |
|------------|-------------------------------|--|
| 1 | Circular mensasurement | Radius=48.500µm Perimeter=304.734µm Area=7389.812µm |
| 2 | Concentric circle mensurement | Radius1=36.800µm Perimeter1=231.222µm Area1=4254.502µm Length=125.668µm Radius2=27.951µm Perimeter1=175.620µm Area1=2454.369µm |

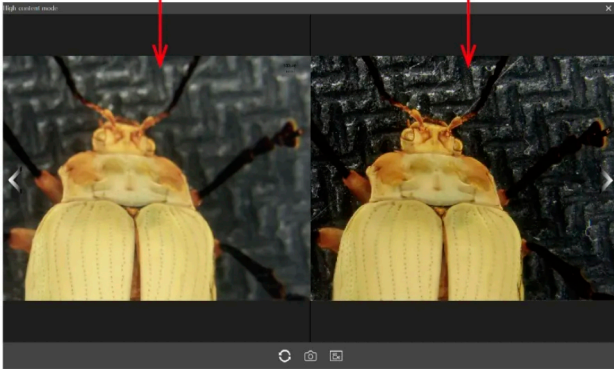
Camera properties settings

With image properties memory function, restarting the software will restore the image properties value before the software is closed. Support adjusting target brightness, exposure, gain, white balance, image RB parameters, contrast, chroma, saturation, sharpness, gamma, restore the default parameters (Default) and etc.



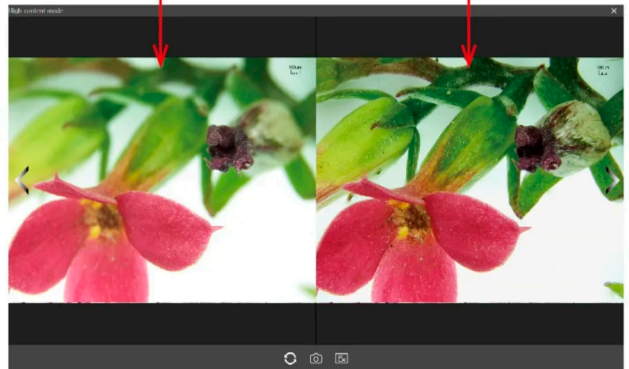
Microscopic images

Image after using the high content function



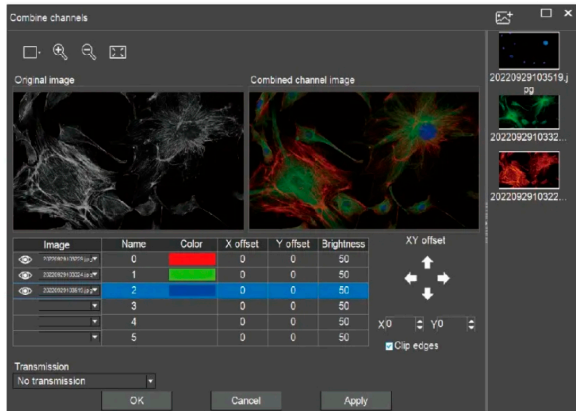
Microscopic images

Image after using the high content function



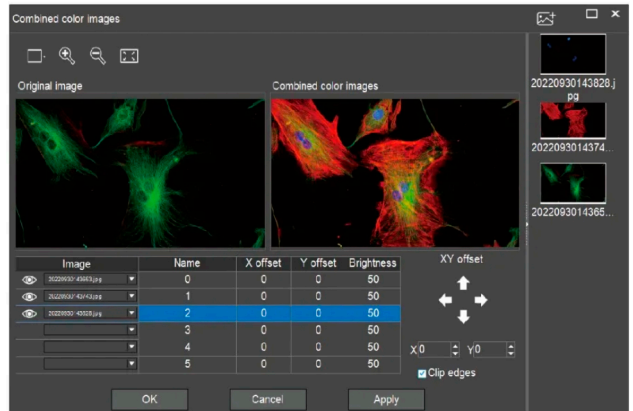
Combined channels

images can be assigned to channels quickly and reliably



Combined color images

easily overlay fluorescent microscopic imaging



Snapshot



Preview window setting



Image zoom in



Image zoom out



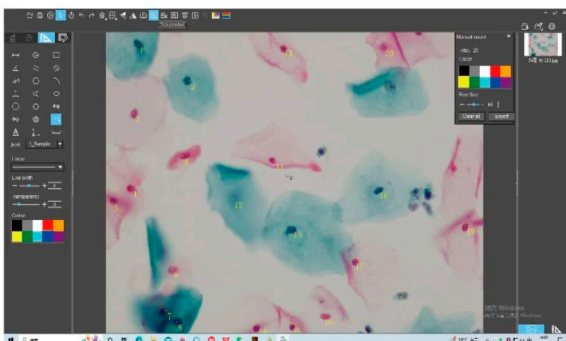
Fit to window



Import image

Manual counting function

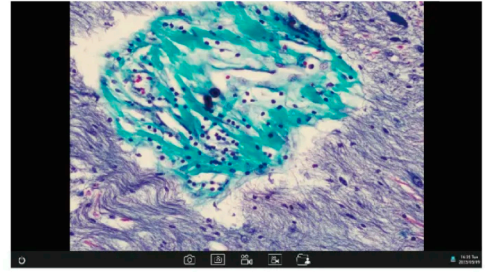
Convenient to count the number of cell nuclei and export statistical reports with one click



Statistical reports

| Sampler | | | |
|------------|----------|----------|-----------|
| 20 | | | |
| | | | |
| Measure | Object | N | Intensity |
| | 1 | 340 | 124 |
| | 2 | 888 | 483 |
| | 3 | 302 | 801 |
| | 4 | 274 | 1955 |
| | 5 | 71 | 1693 |
| | 6 | 707 | 2300 |
| | 7 | 659 | 2775 |
| | 8 | 751 | 2884 |
| | 9 | 820 | 1238 |
| | 10 | 1877 | 149 |
| | 11 | 1788 | 1281 |
| | 12 | 1344 | 1665 |
| | 13 | 1970 | 1958 |
| | 14 | 1409 | 2028 |
| | 15 | 1961 | 2025 |
| | 16 | 2301 | 2831 |
| | 17 | 2828 | 2276 |
| | 18 | 2884 | 1874 |
| | 19 | 3804 | 1924 |
| | 20 | 2940 | 149 |
| Statistics | N | Y | Intensity |
| Min | 71 | 124 | 19 |
| Max | 3804 | 2928 | 117 |
| Range | 3733 | 2804 | 98 |
| Sum | 29895 | 33874 | 1455 |
| Mean | 1494.75 | 1693.7 | 72.75 |
| Variance | 1049157 | 886672.6 | 527.4878 |
| Std. Dev. | 1024.284 | 941.5798 | 23.0074 |
| Sampler | 20 | | |

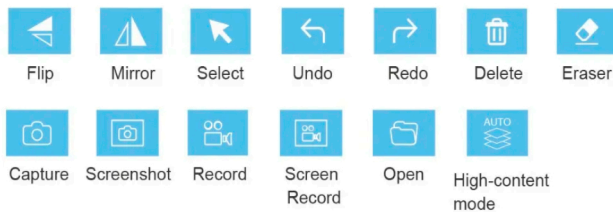
WiFi Lab AO is an Android version APP, which is pre-installed into the smart display cameras or smart cameras at the factory and does not need to be installed by the user. After the camera hardware starts, it will automatically enter the WiFi Lab AO main interface. This APP can not be uninstalled by the user, but it can be updated and upgraded through a USB flash drive.



» Startup animation

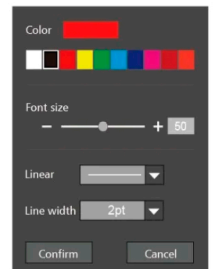
Customizable boot-up animation, such as displaying the agent's/distributor's logo, to help them better promote their brand.

» Common tools



» Annotation Tools

Annotate and edit on live and static image.



» Calibration and Measurement

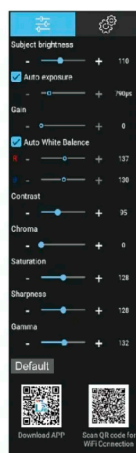
Built-in calibration for 4X, 10X, 40X, 100X of microscopes CX23, Ei, E100, students do not need to calibrate themselves; support creating calibration for other microscope models.



» Camera properties settings

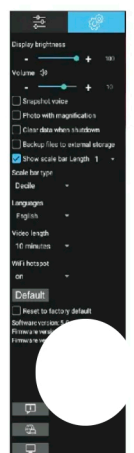
With image properties memory function, restarting the software will restore the image properties value before the software is closed.

Support adjusting target brightness, exposure, gain, white balance, image RB parameters, contrast, chroma, saturation, sharpness, gamma, restore the default parameters (Default) and etc.



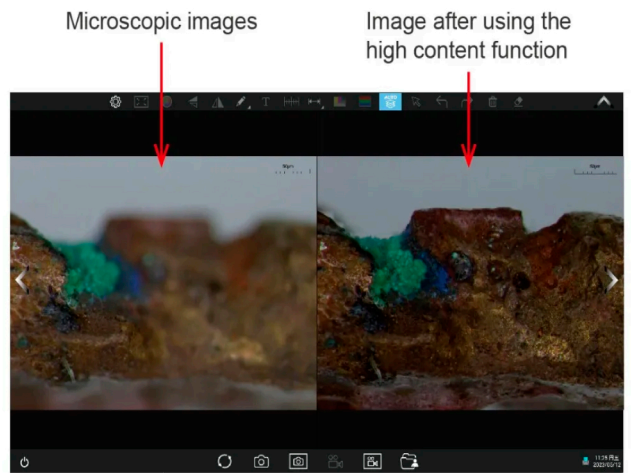
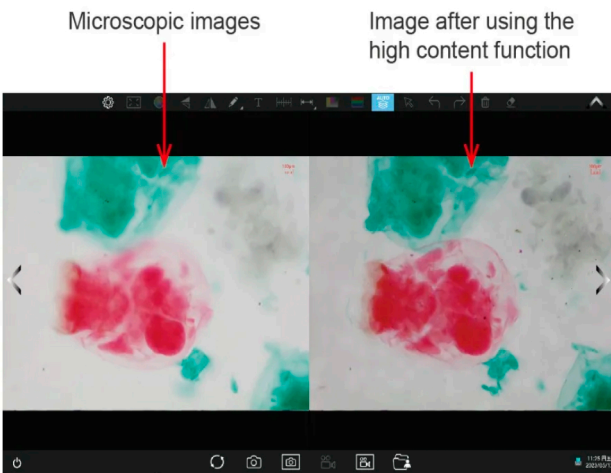
» Preference Settings

Users can set preferences such as language, brightness, sound, video duration, scale bar, back up files to a USB drive, restore factory settings, etc. With the authorization of the system administrator, the user can access to the Internet or enter the system desktop on this panel.



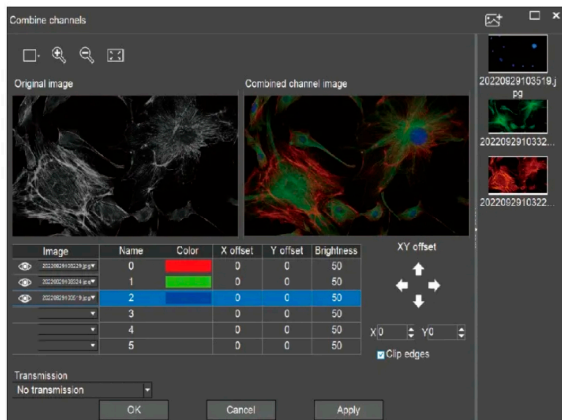
» Automatic depth-of-field fusion function for high content images

The automatic depth-of-field fusion function for high content images uses cutting-edge image processing algorithms and real-time fusion technology, aiming to break through the limitation of insufficient depth-of-field in high magnification objective lenses, and to adjust the focal length can obtain a greater depth of field, thus obtaining a sharper image than a real-time single-frame image. Support 12.0MP and higher resolution cameras, take one picture, two archives.



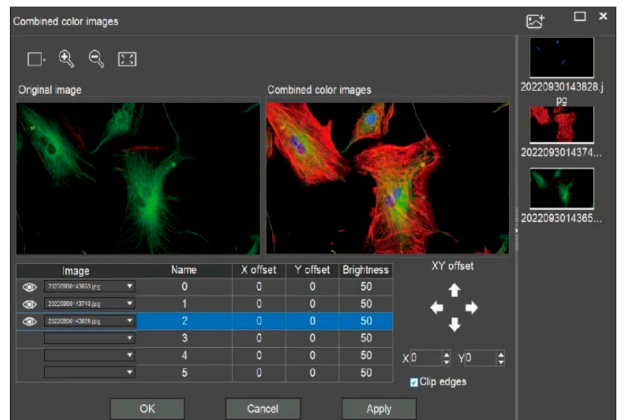
» Combined channels

images can be assigned to channels quickly and reliably



» Combined color images

easily overlay fluorescent microscopic imaging



Snapshot



Preview window
setting



Image zoom in



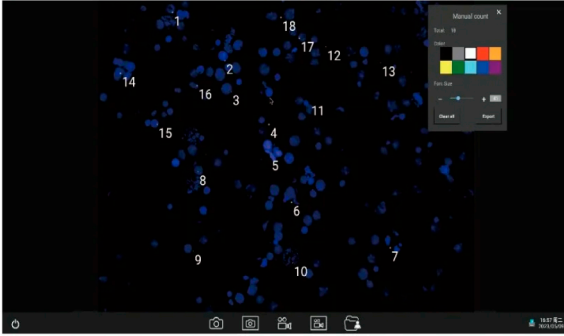
Image zoom out



Fit to window



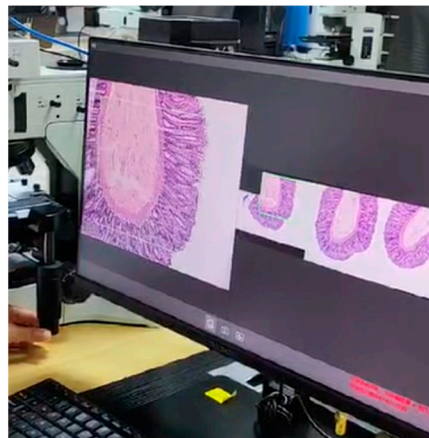
Import image



» Provide two QR codes for cell phone/tablet to download APP and scan to live stream image.



» Large image Function.



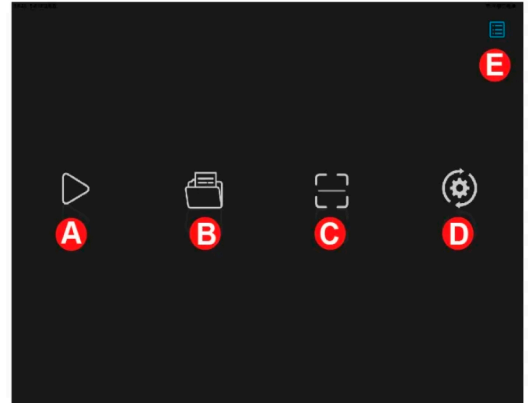
Support IOS, Android

smart phones and tablets by scanning QR code can directly live stream microscopic image, no need to manually enter the password.

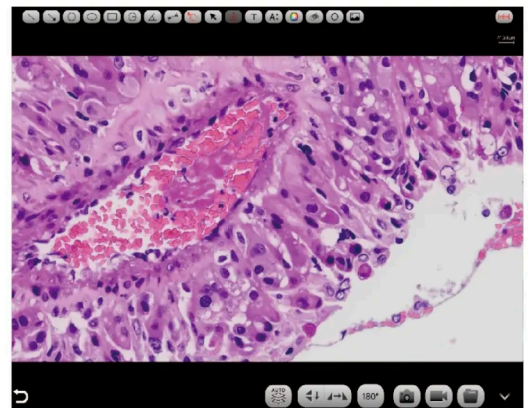
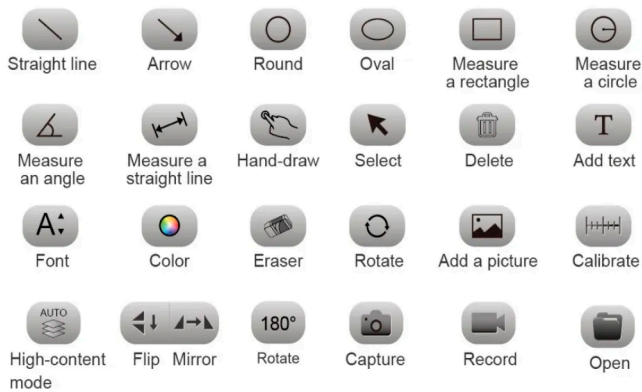


Navigation interface

- A** Preview: Image preview window.
- B** Folder manage: photos and videos management.
- C** Scan: scan the camera's serial number QR code to obtain images (to ensure preview speed, it is recommended that no more than 13 smart terminals are connected to the same camera at the same time).
- D** Settings: App settings.
- E** Operation guide: show/hide.

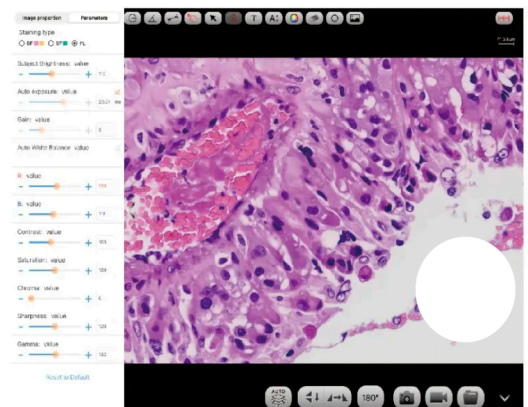


Commonly used tools: annotations, measurements, image capture



Camera settings

Almost adjustment-free, open manual adjustment, support adjusting target brightness, auto/manual exposure, gain, auto/manual white balance (RB channels are adjusted separately), contrast, chromatic, saturation, sharpness, gamma, restore default..



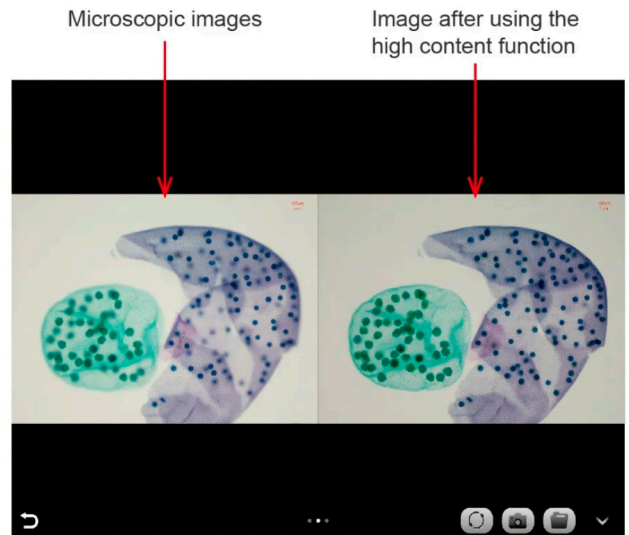
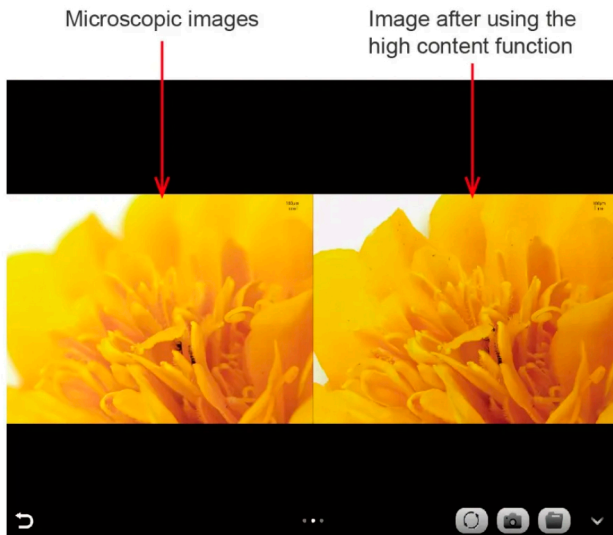
Preset mode

- A** Used in bright field for slides mainly in pink or gold.
- B** Used in bright field for slides mainly in cyan.
- C** Used in fluorescence mainly.



» Automatic depth-of-field fusion function for high content images

The automatic depth-of-field fusion function for high content images uses cutting-edge image processing algorithms and real-time fusion technology, aiming to break through the limitation of insufficient depth-of-field in high magnification objective lenses, and to adjust the focal length can obtain a greater depth of field, thus obtaining a sharper image than a real-time single-frame image. Support 12.0MP and higher resolution cameras, take one picture, two archives.



» Folder Management

Supports viewing pictures and videos, renaming, exporting to local albums, sharing to social networks, deleting, and searching by file name.

